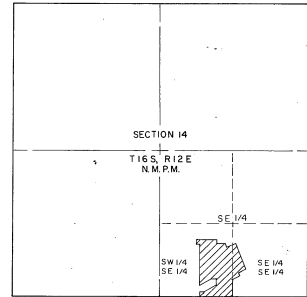
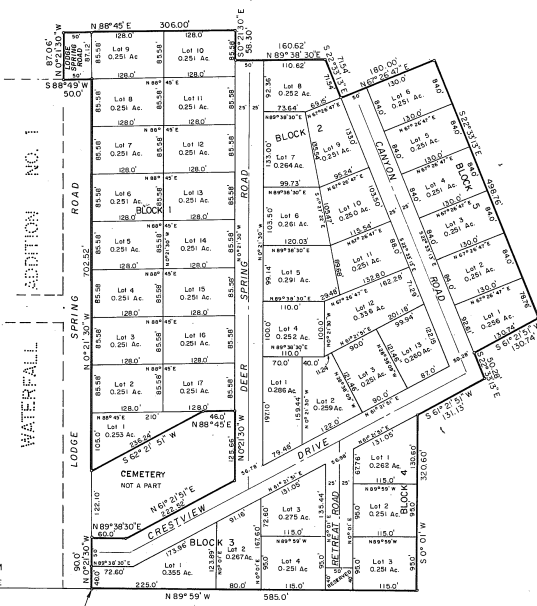
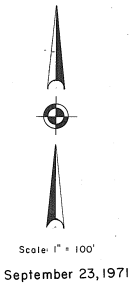


WATERFALL ADDITION NO. 2

Otero County

New Mexico

OWNER: WATERFALL, INC.



Southwest Corner of the
Southwest Quarter
Section 14, T16S, R12E, N4M,4
S 89° 59' E
714.48'

Place of Beginning OWNER: NEWELL R. HAYS

DEDICATION

STATE OF NEW MEXICO)
COUNTY OF OTERO)

KNOW ALL MEN BY THESE PRESENTS THAT WATERFALL, INC. IS THE OWNER AND PROPRIETOR OF A TRACT OF LAND IN THE SOUTHEAST QUARTER OF SECTION 14, T16S, R12E, N4M,4 AND MORE PARTICULARLY DESCRIBED BY BEARS AND BOUNDS AS FOLLOWS:

STARTING AT THE SOUTH QUARTER CORNER OF SAID SECTION 14 AND GOING S 99° 59' E ALONG THE SECTION LINE A DISTANCE OF 714.48 FEET TO THE PLACE OF BEGINNING OF THE TRACT OF LAND HEREBY DESCRIBED; THENCE N 0° 21' 30" W A DISTANCE OF 90.00 FEET; THENCE N 89° 38' 30" E A DISTANCE OF 60.0 FEET; THENCE N 61° 21' 51" E A DISTANCE OF 222.52 FEET; THENCE N 0° 21' 30" W A DISTANCE OF 125.66 FEET; THENCE S 88° 45' W A DISTANCE OF 46.0 FEET; THENCE S 65° 21' 51" W A DISTANCE OF 236.23 FEET; THENCE N 0° 21' 30" W A DISTANCE OF 102.52 FEET; THENCE S 88° 49' 00" W A DISTANCE OF 50.0 FEET; THENCE N 0° 21' 30" W A DISTANCE OF 97.06 FEET; THENCE N 88° 48' E A DISTANCE OF 305.00 FEET; THENCE S 0° 21' 50" E A DISTANCE OF 55.30 FEET; THENCE N 89° 38' 30" E A DISTANCE OF 100.00 FEET; THENCE S 22° 33' 13" E A DISTANCE OF 71.54 FEET; THENCE N 27° 26' 47" E A DISTANCE OF 190.00 FEET; THENCE S 22° 33' 13" E A DISTANCE OF 405.76 FEET; THENCE S 61° 21' 51" W A DISTANCE OF 130.73 FEET; THENCE S 22° 33' 13" E A DISTANCE OF 50.28 FEET; THENCE S 61° 21' 51" W A DISTANCE OF 131.13 FEET; THENCE S 0° 01' W A DISTANCE OF 300.60 FEET; THENCE N 89° 59' W A DISTANCE OF 258.0 FEET TO THE PLACE OF BEGINNING AND CONTAINING 13.876 ACRES, S 0° 01' W A DISTANCE OF 300.60 FEET; THENCE N 89° 59' W A DISTANCE OF 258.0 FEET TO THE PLACE OF BEGINNING AND CONTAINING 13.876 ACRES,

AND DO HEREBY CAUSE THE ABOVE DESCRIBED TRACT OF LAND TO BE SUBDIVIDED AND PLATTED, AND DESIGNATED AS "WATERFALL ADDITION NO. 2", OTERO COUNTY, NEW MEXICO, AS SHOWN ON THE FOREGOING PLAT, AND IN RECORDING THIS PLAT DO CAUSE ALL OF THE STREETS WITHIN THE BOUNDS OF THE ABOVE DESCRIBED TRACT OF LAND TO BE DEDICATED TO THE USE AND BENEFIT OF THE PUBLIC.

IN WITNESS WHEREOF THE PRINCIPALS OF WATERFALL, INC., HAVE SET THEIR HANDS AND SEALS ON THIS 24 DAY OF SEPTEMBER, 1971.
WATERFALL, INC. BY: Ira Ruff, Jr. PRESIDENT BETTY J. RUFF, SECRETARY

CORPORATE ACKNOWLEDGMENT

STATE OF NEW MEXICO)
COUNTY OF OTERO)

ON THIS 24 DAY OF September, 1971, BEFORE ME PERSONALLY APPEARED IRA RUFF, JR., PRESIDENT AND BETTY J. RUFF, SECRETARY OF WATERFALL, INC., A NEW MEXICO CORPORATION, ON BEHALF OF SAID CORPORATION, KNOWN TO ME TO BE THE PERSONS WHO EXECUTED THE FOREGOING INSTRUMENT, AND THEY ACKNOWLEDGED THAT THEY EXECUTED SAID INSTRUMENT AS THEIR FREE ACT AND DEED.

WITNESS MY HAND AND SEAL ON THIS DAY AND YEAR LAST WRITTEN ABOVE. Malcolm E. Marx, NOTARY PUBLIC MY COMMISSION EXPIRES: 5-26-74

ACCEPTANCE OF THE OTERO COUNTY COMMISSION

STATE OF NEW MEXICO)
COUNTY OF OTERO)

THIS PLAT OF "WATERFALL ADDITION NO. 2" WAS ON THIS 15 DAY OF Oct, 1971, APPROVED BY THE OTERO COUNTY COMMISSION. Clifton D. McDonald, CHAIRMAN ATTEST: Paul Roberts, COUNTY CLERK

AFFIDAVITS

STATE OF NEW MEXICO)
COUNTY OF OTERO)

THIS SUBDIVISION LIES WITHIN THE PLATTING AND PLANNING JURISDICTION OF OTERO COUNTY. Quinton E. Daniel
WATERFALL, INC. HEREBY AGREES TO CONSTRUCT AT ITS OWN EXPENSE, ALL ROADS IN THIS SUBDIVISION INCLUDING, BUT NOT LIMITED TO, GRADING, DRAINAGE, BASE COURSE, CULVERTS, AND BRIDGES. Ira Ruff, Jr.
IRA RUFF, JR., PRESIDENT

WATERFALL, INC. HEREBY STATES THAT WATER CAN BE GUARANTEED. Ira Ruff, Jr.
RESTRICTIVE COVENANTS APPLICABLE TO THIS SUBDIVISION ARE RECORDED IN BOOK PAGE OF THE RECORDS OF OTERO COUNTY.

APPROVED THIS 22 DAY OF October, 1971, John E. Kays, EXAMINING SURVEYOR
APPROVED THIS 22 DAY OF October, 1971, George H. Murray, COUNTY SAMITARIAN
APPROVED THIS 15 DAY OF October, 1971, George H. Murray, CHAIRMAN, OTERO COUNTY PLANNING COMMISSION

ENGINEER'S CERTIFICATE

STATE OF NEW MEXICO)
COUNTY OF OTERO)

I, Quinton E. Daniel, A REGISTERED PROFESSIONAL ENGINEER AND LAND SURVEYOR OF THE STATE OF NEW MEXICO DO HEREBY CERTIFY THAT THIS PLAT OF "WATERFALL ADDITION NO. 2" WAS PREPARED FROM FIELD NOTES OF AN ACTUAL SURVEY MADE BY ME OR UNDER MY DIRECTION, AND THAT THE SAME IS TRUE AND CORRECT TO THE BEST OF MY KNOWLEDGE AND BELIEF. Quinton E. Daniel
NEW MEXICO REGISTRATION NO. 1359

STATE OF NEW MEXICO)
COUNTY OF OTERO)
RECORDED IN THE OFFICE OF THE COUNTY CLERK AND EX-OFFICIO RECORDER OF OTERO COUNTY, NEW MEXICO, AT 4:30 O'CLOCK, P. M., THIS 20 DAY OF October, 1971.
Paul Roberts, COUNTY CLERK BY: _____

RECEPTION NUMBER: 84754 BOOK: 15 PAGE: 1 + 2

STATE OF NEW MEXICO)
COUNTY OF OTERO)
I, Paul Roberts, COUNTY CLERK DO HEREBY CERTIFY THE FOREGOING TO BE A TRUE AND CORRECT COPY OF THE ORIGINAL FILED IN MY OFFICE THE 20 DAY OF October, 1971, IN PLAT BOOK 15, PAGE 1 + 2

WITNESS MY HAND AND SEAL OF MY SAID OFFICE THIS 20 DAY OF October, 1971.
Paul Roberts, COUNTY CLERK BY: _____, DEPUTY

BK 15 PG 1-2