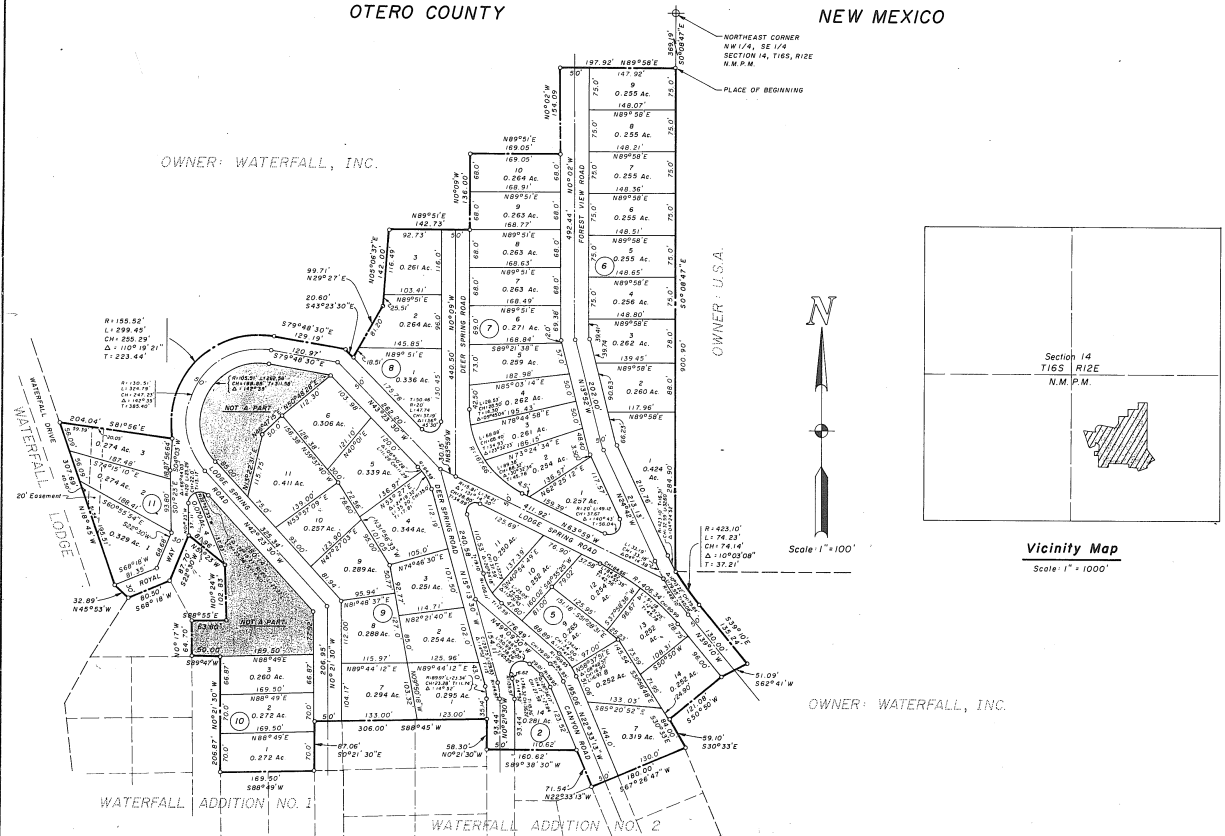


WATERFALL ADDITION NO. 3

OTERO COUNTY

NEW MEXICO

OWNER: WATERFALL, INC.



DEDICATION
 STATE OF NEW MEXICO SS
 COUNTY OF OTERO
 KNOW ALL MEN BY THESE PRESENTS THAT WATERFALL, INC. IS THE OWNER AND PROPRIETOR OF A TRACT OF LAND IN THE SOUTHEAST QUARTER OF SECTION 14, T16S, R12E, N.M.P.M. AND MORE PARTICULARLY DESCRIBED BY BEARS AND BOUNDS AS FOLLOWS:
 Starting at the Northeast corner of the Southeast quarter of said Section 14 and going S 0° 08' 47" E a distance of 363.19 feet to the place of beginning of the tract of land herein described; thence continuing S 0° 08' 47" E a distance of 900.90 feet; thence following a curve to the left whose radius is 423.10 feet through an arc of 10° 03' 09" an arc distance of 71.23 feet; thence S 39° 10' E a distance of 135.24 feet; thence S 62° 31' W a distance of 51.09 feet; thence S 50° 50' W a distance of 121.08 feet; thence S 30° 33' E a distance of 59.10 feet; thence S 67° 26' 47" W a distance of 180.00 feet; thence N 22° 33' 13" W a distance of 71.54 feet; thence S 89° 38' 30" W a distance of 169.50 feet; thence N 0° 21' 30" W a distance of 206.07 feet; thence S 89° 17' W a distance of 305.00 feet; thence S 0° 21' 30" E a distance of 87.05 feet; thence S 88° 45' W of 150.50 feet; thence W 0° 21' 30" W a distance of 59.30 feet; thence S 58° 45' W a distance of 50.00 feet; thence N 0° 17' W a distance of 64.70 feet; thence S 88° 55' E a distance of 63.00 feet; thence N 01° 24' W a distance of 108.33 feet; thence N 51° 23' W a distance of 81.96 feet; thence S 22° 30' W a distance of 87.70 feet; thence S 63° 13' W a distance of 80.50 feet; thence N 45° 53' W a distance of 38.28 feet; thence N 18° 39' W a distance of 307.69 feet; thence S 81° 35' E a distance of 204.04 feet; thence following a curve to the right whose radius is 155.56 feet through an arc of 110° 19' 21" an arc distance of 229.45 feet; thence S 79° 48' 30" E a distance of 129.19 feet; thence S 82° 33' 30" E a distance of 20.50 feet; thence W 09° 27' E a distance of 99.71 feet; thence W 05° 06' 37" E a distance of 142.00 feet; thence W 89° 51' E a distance of 142.73 feet; thence N 0° 09' W a distance of 136.00 feet; thence N 89° 51' E a distance of 159.05 feet; thence N 0° 02' W a distance of 154.09 feet; thence N 89° 58' E a distance of 197.92 feet to the place of beginning and containing 19,776 acres.

AND DO HEREBY CAUSE THE ABOVE DESCRIBED TRACT OF LAND TO BE SUBDIVIDED AND PLATTED, AND DESIGNATED AS "WATERFALL ADDITION NO. 3", OTERO COUNTY, NEW MEXICO, AS SHOWN ON THE FOREGOING PLAT, AND IN RECORDING THIS PLAT DO CAUSE ALL OF THE STREETS WITHIN THE BOUNDS OF THE ABOVE DESCRIBED TRACT OF LAND TO BE DEDICATED TO THE USE AND BENEFIT OF THE PUBLIC.
 IN WITNESS WHEREOF THE PRINCIPALS OF WATERFALL, INC., HAVE SET THEIR HANDS AND SEALS ON THIS 30 DAY OF August, 1972.

WATERFALL, INC. BY: Ira Ruff, Jr. PRESIDENT JOHN E. CONWAY, SECRETARY

CORPORATE ACKNOWLEDGEMENT
 STATE OF NEW MEXICO SS
 COUNTY OF OTERO
 ON THIS 30 DAY OF August, 1972, BEFORE ME PERSONALLY APPEARED IRA RUFF, JR., PRESIDENT AND JOHN E. CONWAY, SECRETARY OF WATERFALL, INC., A NEW MEXICO CORPORATION, ON BEHALF OF SAID CORPORATION, KNOWN TO ME TO BE THE PERSONS WHO EXECUTED THE FOREGOING INSTRUMENT, AND THEY ACKNOWLEDGED THAT THEY EXECUTED SAID INSTRUMENT AS THEIR FREE ACT AND DEED.
 WITNESS MY HAND AND SEAL ON THIS DAY AND YEAR LAST WRITTEN ABOVE. Donald M. Moore NOTARY PUBLIC MY COMMISSION EXPIRES: 5-26-74

ACCEPTANCE OF THE OTERO COUNTY COMMISSION
 STATE OF NEW MEXICO SS
 COUNTY OF OTERO
 THIS PLAT OF "WATERFALL ADDITION NO. 3" WAS ON THIS 23 DAY OF Aug, 1972, APPROVED BY THE OTERO COUNTY COMMISSION.
William S. Daniel CHAIRMAN ATTEST: Josephine Reed, Secretary COUNTY CLERK

AFFIDAVITS
 STATE OF NEW MEXICO SS
 COUNTY OF OTERO
 THIS SUBDIVISION LIES WITHIN THE PLATTING AND PLANNING JURISDICTION OF OTERO COUNTY. William S. Daniel
 WATERFALL, INC. HEREBY AGREES TO CONSTRUCT AT ITS OWN EXPENSE, ALL ROADS IN THIS SUBDIVISION INCLUDING, BUT NOT LIMITED TO, GRADING, DRAINAGE, BASE COURSE, CULVERTS, AND BRIDGES.
Ira Ruff, Jr. PRESIDENT

WATERFALL, INC. HEREBY STATES THAT WATER CAN BE GUARANTEED.
 RESTRICTIVE COVENANTS APPLICABLE TO THIS SUBDIVISION ARE RECORDED IN BOOK PAGE OF THE RECORDS OF OTERO COUNTY.
 APPROVED THIS 24 DAY OF Aug, 1972
 APPROVED THIS 24 DAY OF Aug, 1972
 ENGINEER'S CERTIFICATE

STATE OF NEW MEXICO SS
 COUNTY OF OTERO
 I, QUINCY S. DANIEL, A REGISTERED PROFESSIONAL ENGINEER AND LAND SURVEYOR OF THE STATE OF NEW MEXICO DO HEREBY CERTIFY THAT THIS PLAT OF "WATERFALL ADDITION NO. 3" WAS PREPARED FROM FIELD NOTES OF AN ACTUAL SURVEY MADE BY ME OR UNDER MY DIRECTION, AND THAT THE SAME IS TRUE AND CORRECT TO THE BEST OF MY KNOWLEDGE AND BELIEF.
Quincy S. Daniel
 NEW MEXICO REGISTRATION NO. 1359

STATE OF NEW MEXICO SS
 COUNTY OF OTERO
 RECORDED IN THE OFFICE OF THE COUNTY CLERK AND EX-OFFICIO RECORDER OF OTERO COUNTY, NEW MEXICO, AT 2:45 O'CLOCK, P. M., THIS 30 DAY OF Aug, 1972.
Josephine Reed COUNTY CLERK BY: Josephine Reed
 RECEIPTION NUMBER: 20550 BOOK: 16 PAGE: 3-4

STATE OF NEW MEXICO SS
 COUNTY OF OTERO
 I, Josephine Reed, COUNTY CLERK DO HEREBY CERTIFY THE FOREGOING TO BE A TRUE AND CORRECT COPY OF THE ORIGINAL FILED IN MY OFFICE THE 30 DAY OF Aug, 1972, IN PLAT BOOK 16 PAGE 3-4.
 WITNESS MY HAND AND THE SEAL OF MY SAID OFFICE THIS 30 DAY OF Aug, 1972.
Josephine Reed COUNTY CLERK BY: Josephine Reed DEPUTY

DANIEL ENGINEERING COMPANY
 1015 OREGON AVE. PHONE 437-0340
 ALAMOGORDO, NEW MEXICO 88310

BK 16 PG 3-4

WATERFALL ADDITION #3
 BK 16 PG 3-4

42